

AURORA

Where sky and earth breathe as one: Aurora Series.
Its light, silk-smooth as the aurora's sweep, gilds the
stars—no shadow stays.



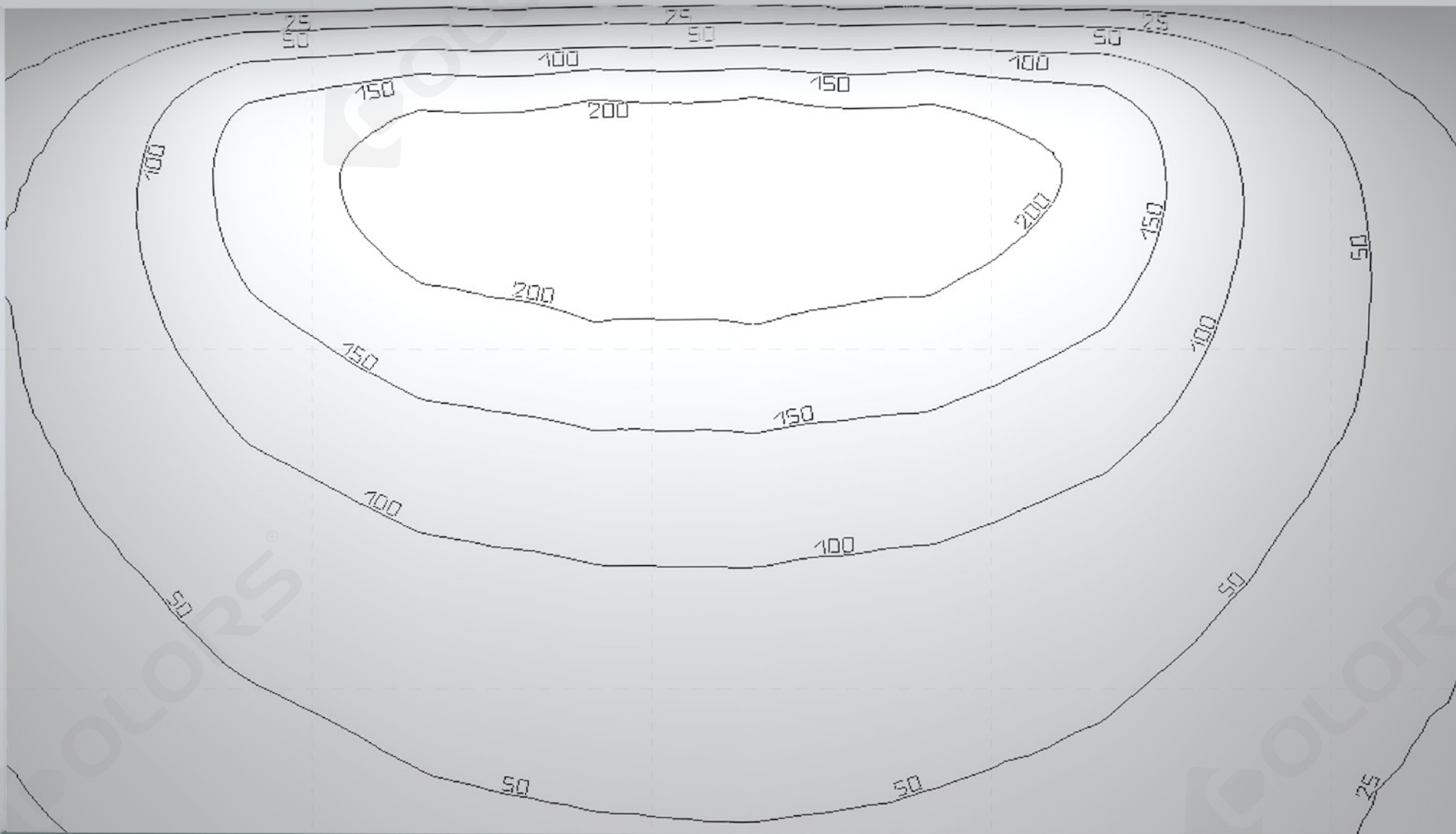
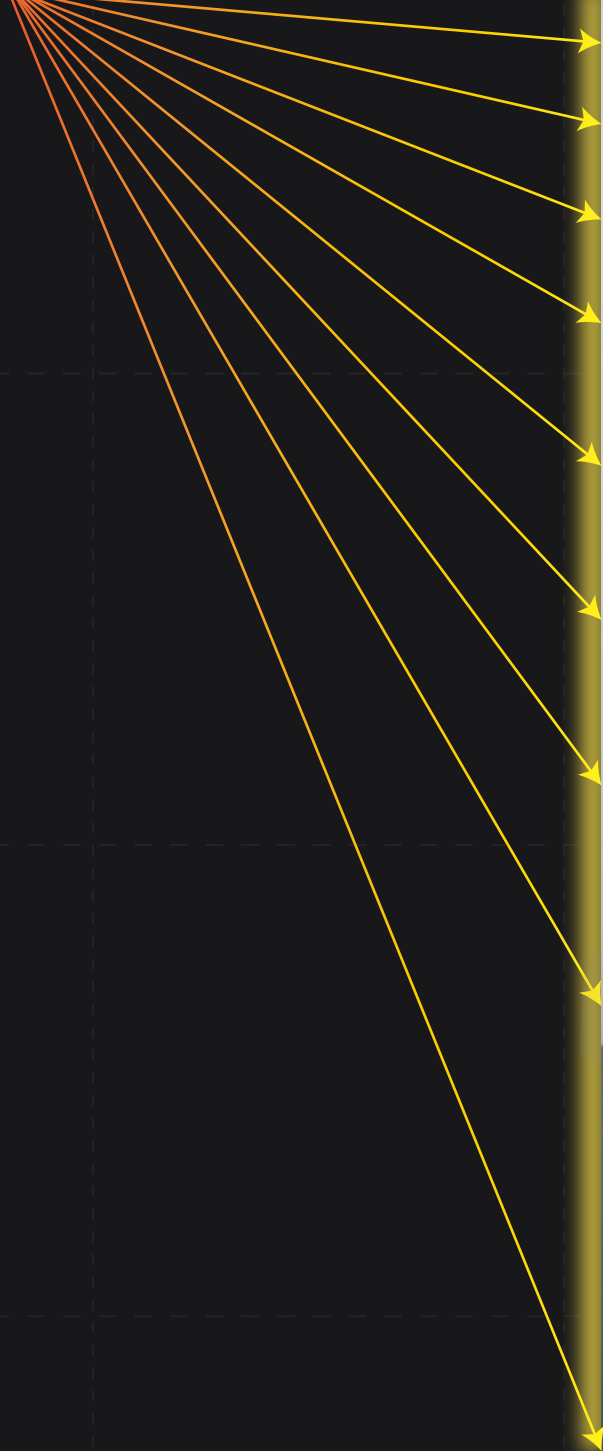
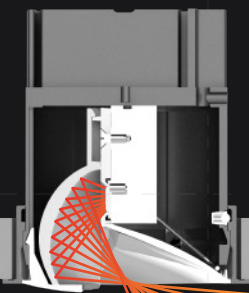
AURORA

The Aurora series features an excellent deep anti-glare design with a shading angle of 100° and a narrow edge design of 4.5mm. It boasts an outstanding wall-washing optical design, offering a variety of reflector options and product size choices to meet wall-washing applications in spaces with a height of 3-6 meters. The products are applied to murals or corridor walls in luxury villas and star-rated hotels, achieving a smooth transition with the ceiling when washing the wall.

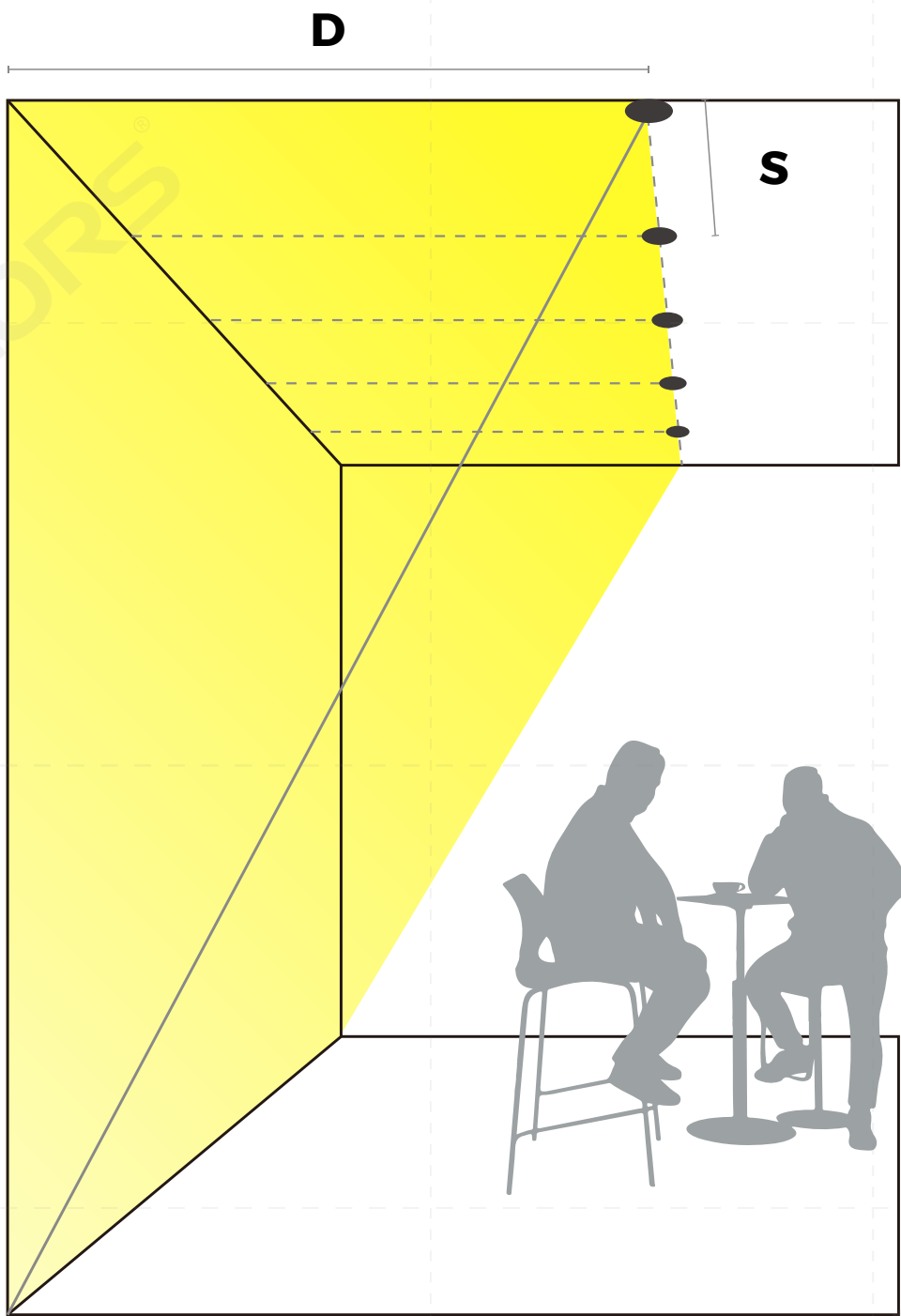


Unique optical design

boosting light's wall coverage, beautifully and efficiently



Extra-wide wall-washing ratio



Recommended lighting layout

Opening	D(mm)	S(mm)	D : S
φ55mm	600-800	600-800	1 : 1
φ75mm	800-1000	880-1100	1 : 1.1
φ95mm	1000-1200	1100-1320	1 : 1.1



MOST COMPLETE AND VERSATILE FAMILY

Comprehensive in sizes, powers, applications

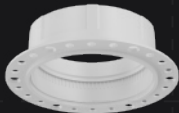
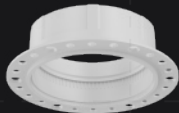
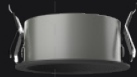
φ55mm
6W/9W/11W
H ≤ 3M



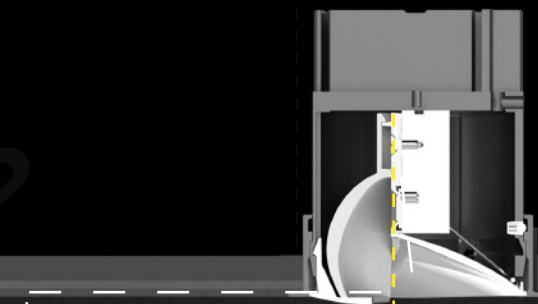
φ75mm
9W/12W/15W/17W
H ≤ 4.5M



φ95mm
20W/25W/30W
H ≤ 6M



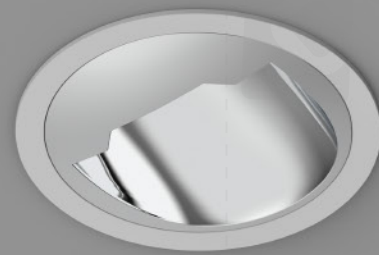
Anti-glare Design



100° Shielding Angle



Flush with the ceiling
No shadowed corners



Split Design

Easy Installation

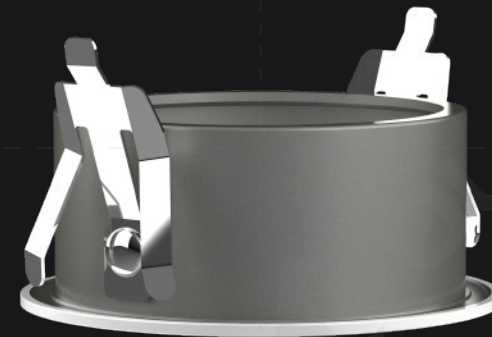
The frame can be installed independently, and the luminaire can be easily secured to the frame using spring balls.

Easy maintenance

When replacing the light source, the main body can be easily detached without damaging the ceiling.

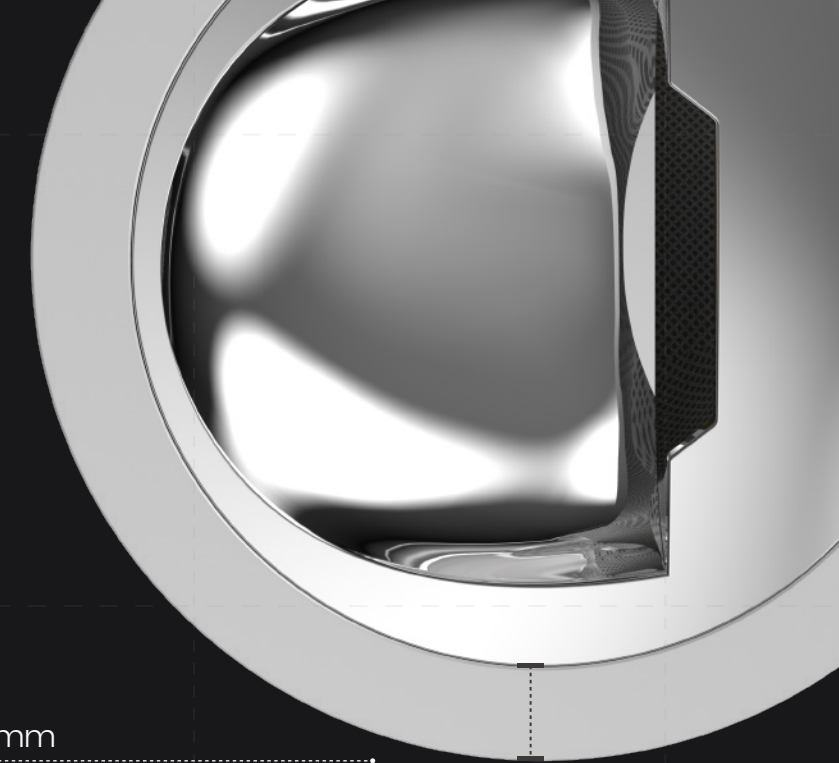
Free combination

The luminaire is compatible with both recessed and non-decorative recessed frames, making it very inventory-friendly.



4.5_{mm}

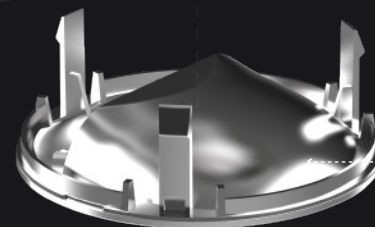
Ultra narrow side ring



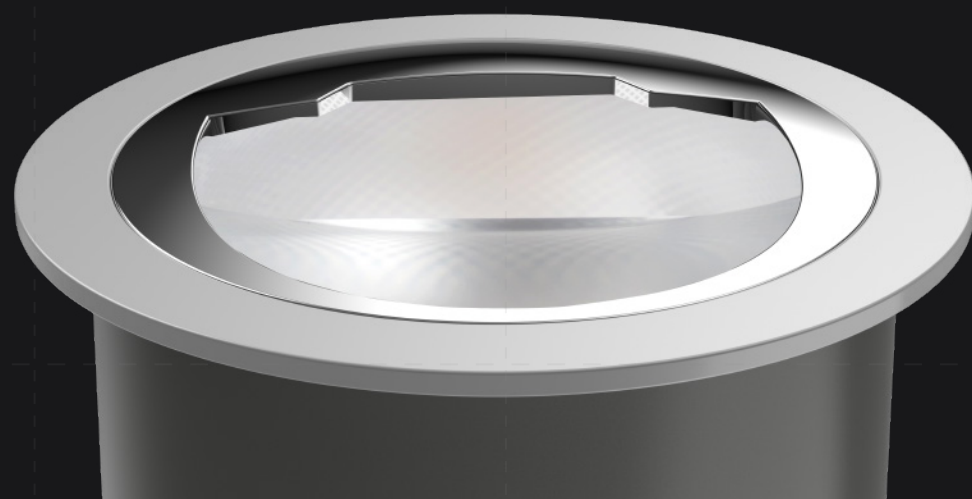
Matrix-style fin upgrade for better heat dissipation.



The pull latch provides a pivot point for removal without damaging the ceiling.



Black chrome and mirror reflectors are optional, providing optimal anti-glare effects.



Recessed or Trimless recessed options



Trimless recessed

Recessed

Horizontal 360°

Pull ring design facilitates easy removal.



Small rectangular label with text, likely providing information about the artwork.



Small rectangular label with text, likely providing information about the artwork.



Small rectangular label with text, likely providing information about the artwork.



SKU	Opening	Power	Input voltage	Output voltage	Input Current (LED)	CRI	CCT	Beam angle	luminous efficacy (lm/w)	Luminous flux (lm)	SDCM
AE55L1 AR55L1	Φ55mm	6W	220-240V	36V	150mA	90	3000K	40°	53	320	≤3
		9W	220-240V	36V	200mA	90	3000K	40°	51	460	≤3
		11W	220-240V	36V	250mA	90	3000K	40°	50	550	≤3
AE75L1 AR75L1	Φ75mm	9W	220-240V	36V	200mA	90	3000K	40°	56	505	≤3
		12W	220-240V	36V	300mA	90	3000K	40°	54	650	≤3
		15W	220-240V	36V	350mA	90	3000K	40°	51	765	≤3
		17W	220-240V	36V	400mA	90	3000K	40°	50	850	≤3
AE95L1 AR95L1	Φ95mm	20W	220-240V	36V	500mA	90	3000K	40°	69	1380	≤3
		25W	220-240V	36V	600mA	90	3000K	40°	68	1700	≤3
		30W	220-240V	36V	750mA	90	3000K	40°	66	1980	≤3



LED LINEAR &
COMMERCIAL
LIGHTING



Tel: +86-755-2923-1888

E-mail: colors@colorsled.com

Web: www.colorsled.com

Add: 17F, Block B, Building 2, North of Skyworth

Inno Valley, Shiyan town, Bao'an District, Shenzhen