

# NM3D Series

NEW NM3D1010    NEW NM3D1010T    UPGRADE NM3D1515    NEW NM3D1515T

3D Twisting  
Solve PCB Disconnection Issue  
ANSI 5 SDCM  
5-year warranty\*

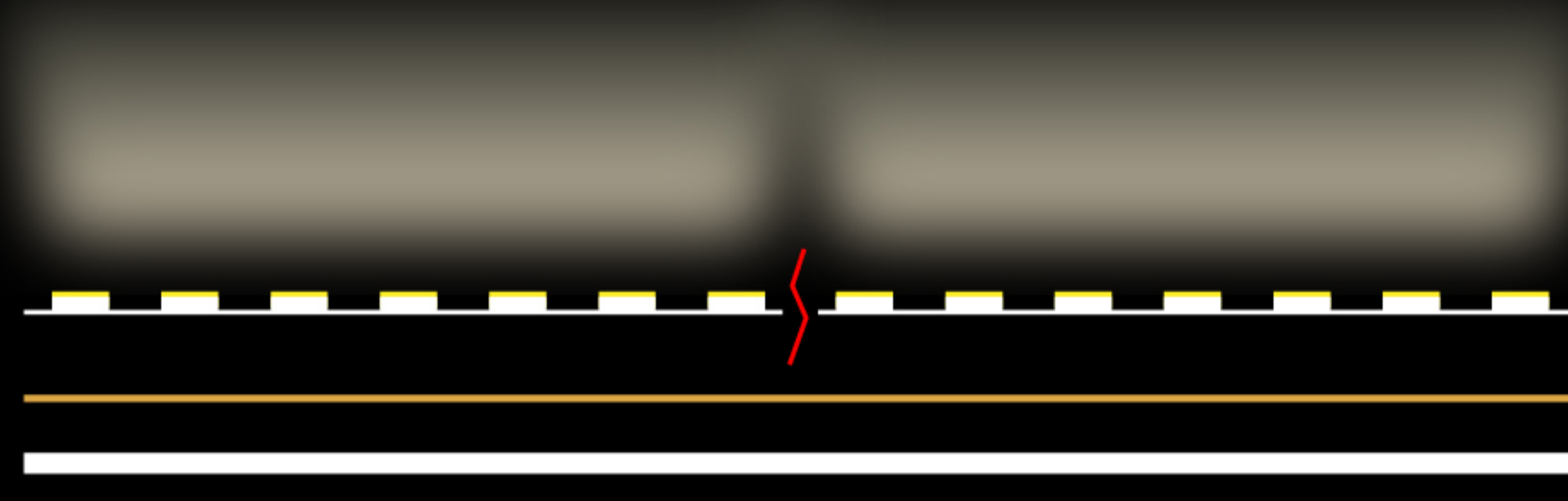
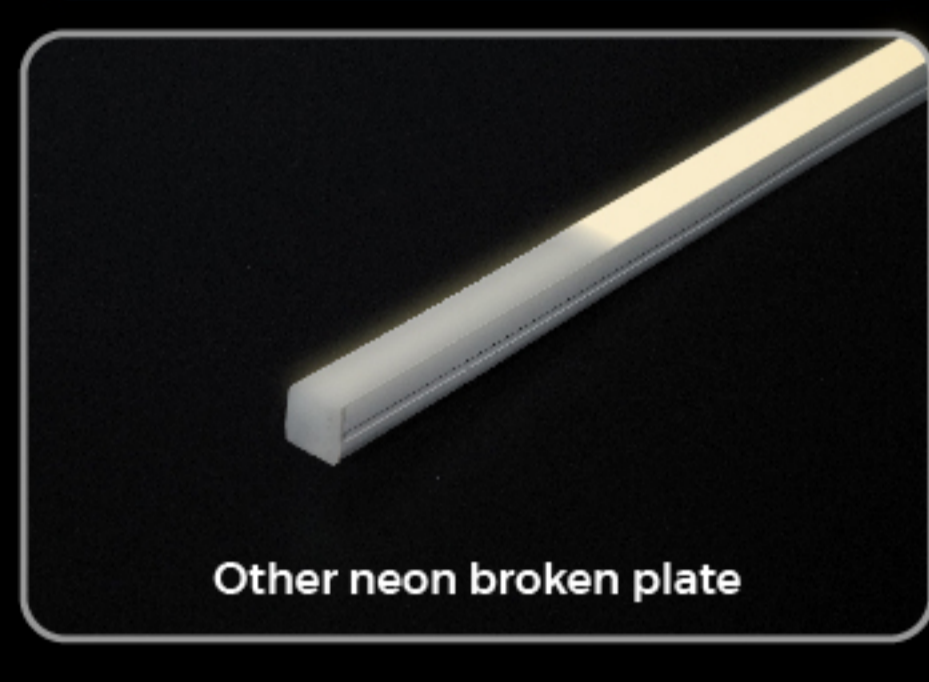
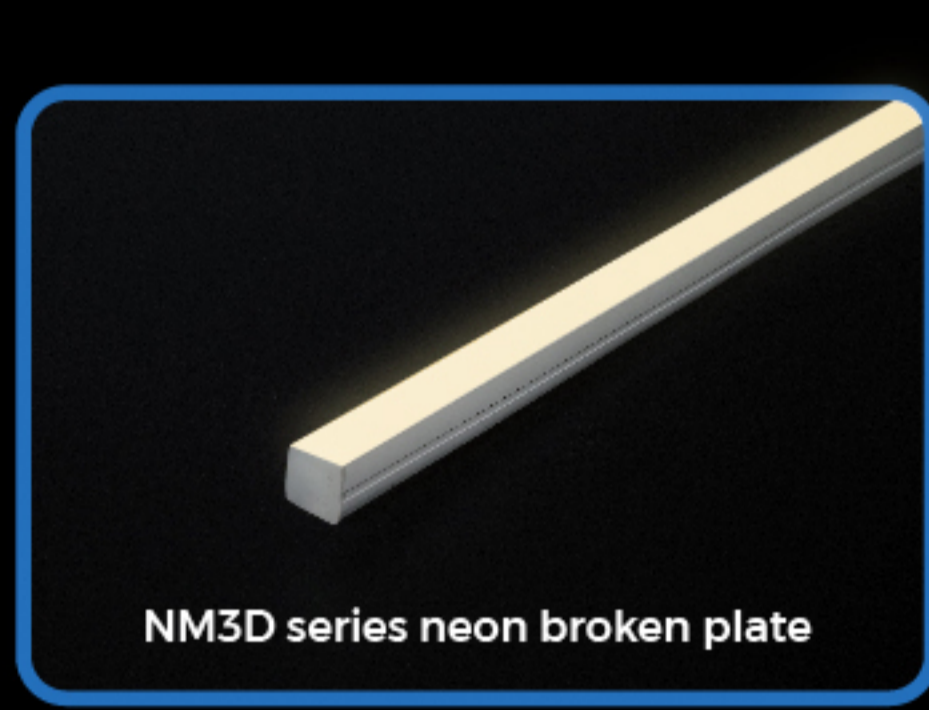
\*Indoor 5-year warranty, outdoor 3-year warranty

## 3D Twisting

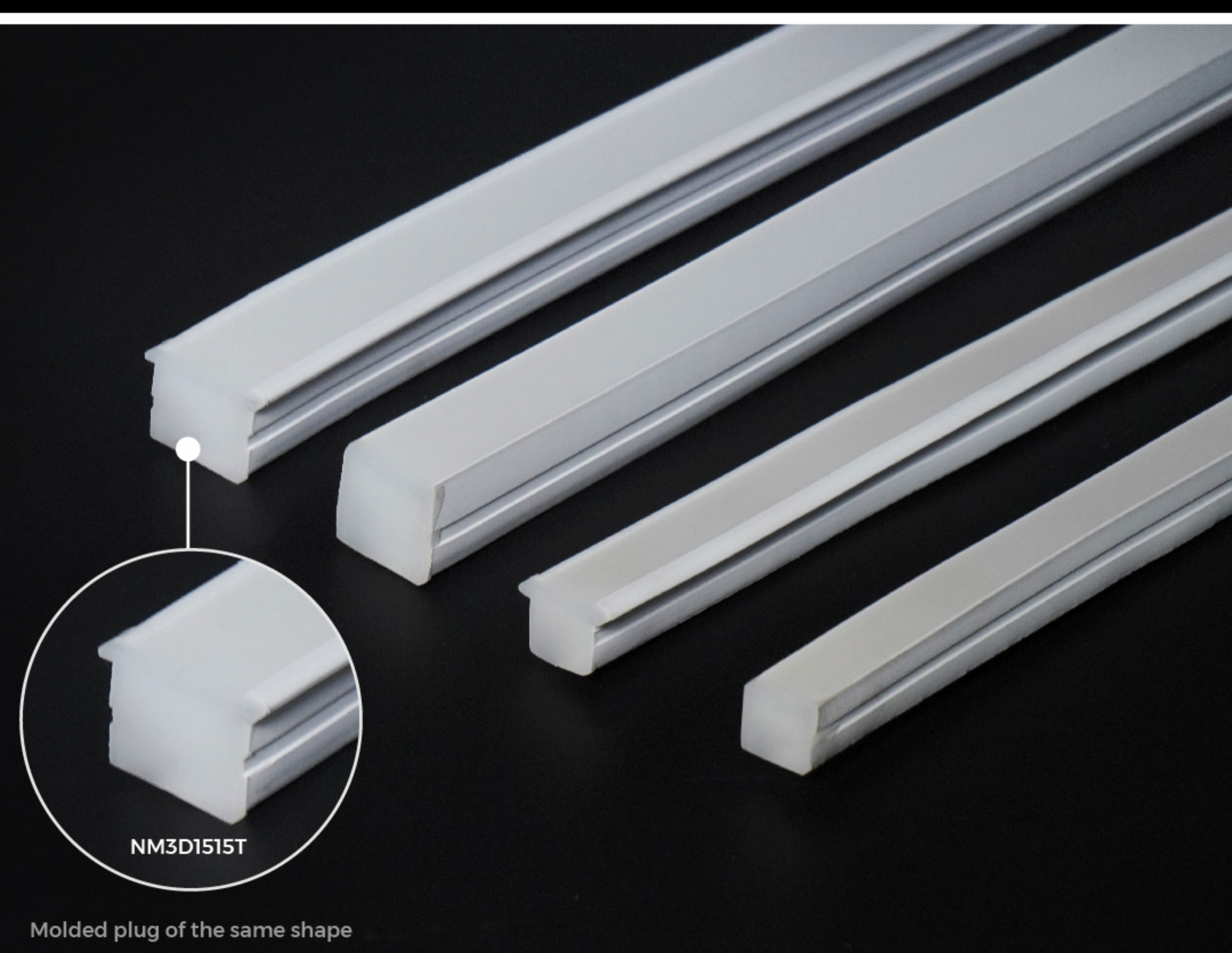
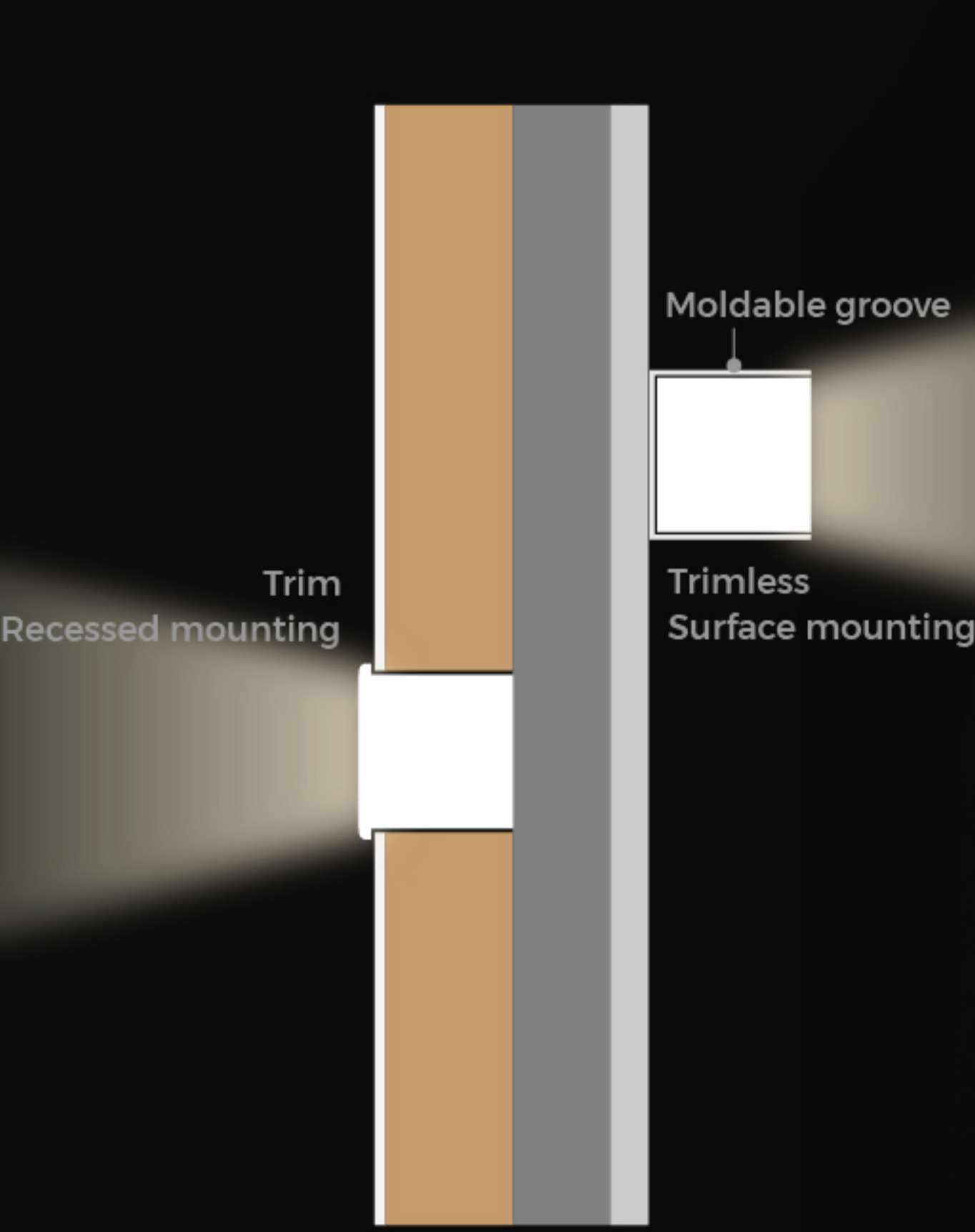
Does not distinguish between top and side bends, and is fully solved, without seams

## Anti-PCB Disconnection

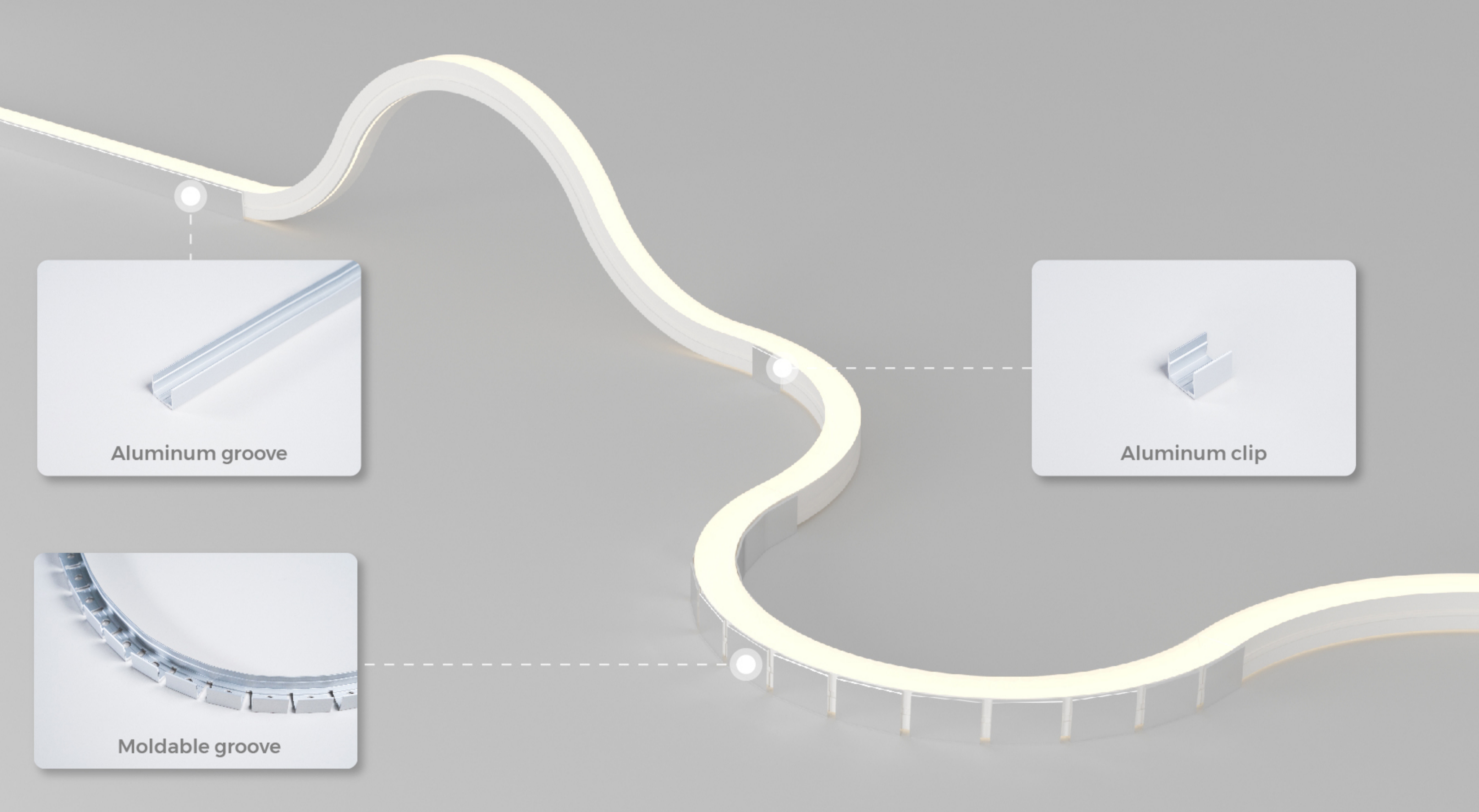
Patented solution, stronger reliability



## Trim & Trimless



	NEW NM3D1515	OLD NM3D1515
ANSI 5 SDCM	✓	✗
High-brightness version	700LM/m	440LM/m
Trim	✓	✗
Anti-PCB Disconnection	✓	✗
10m long	10m	✗

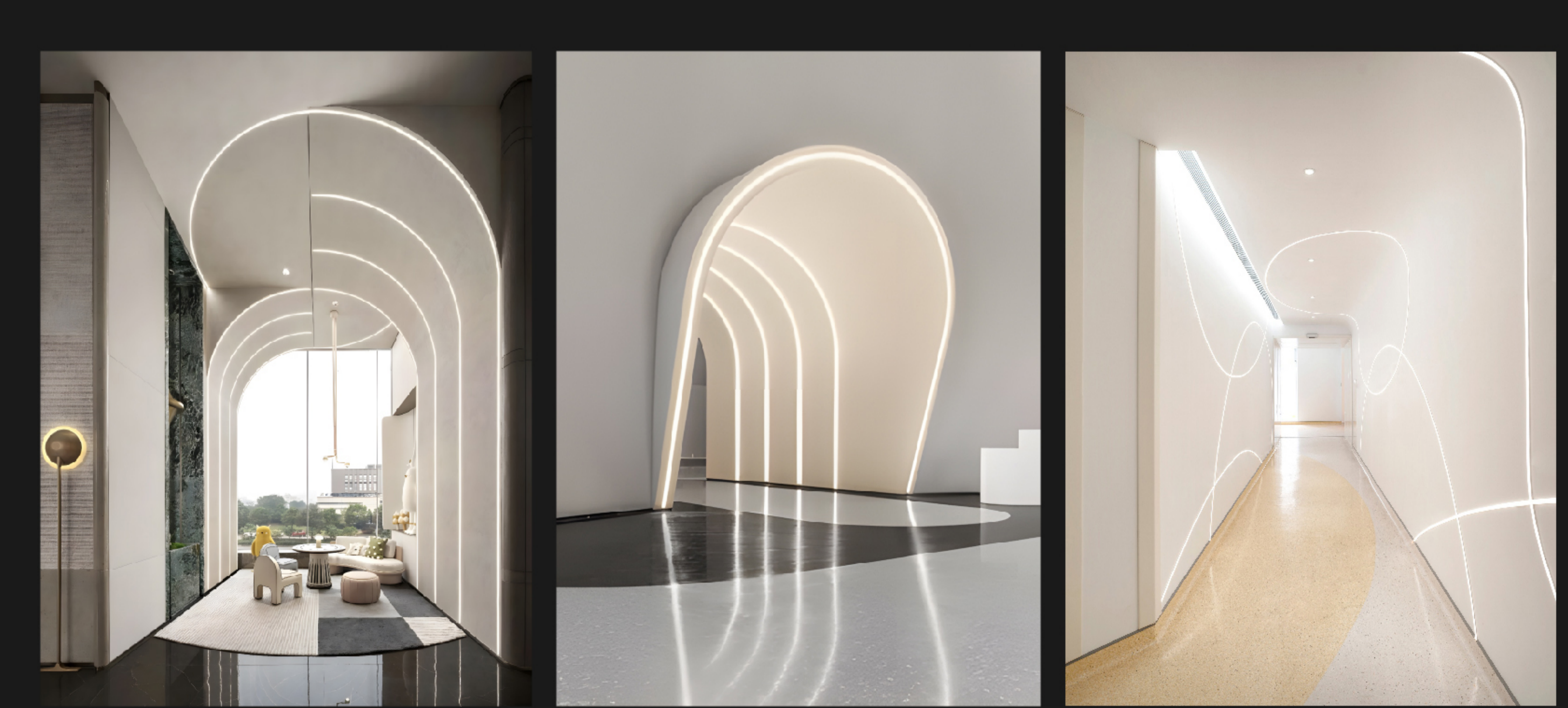
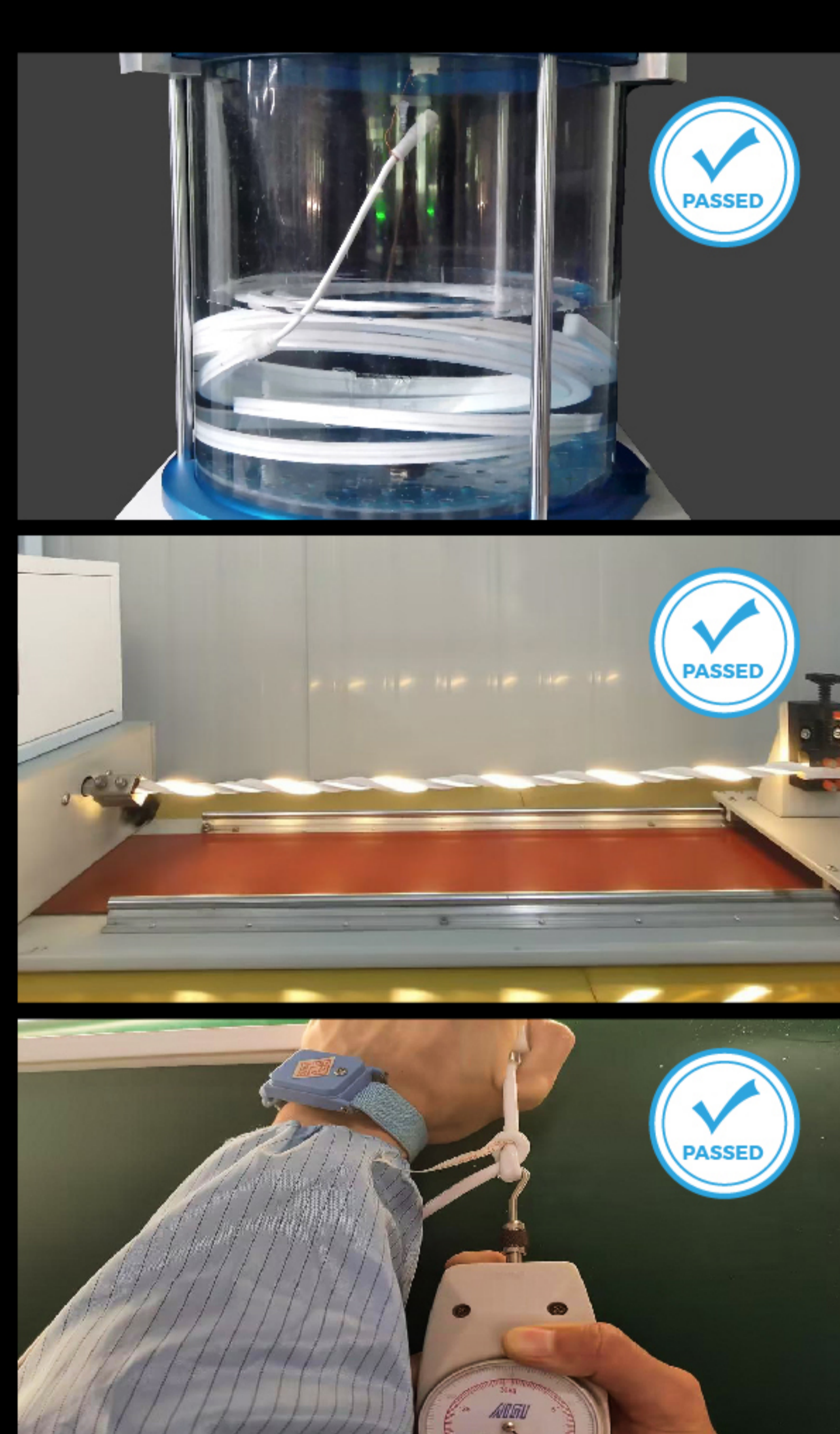


## High Reliable Test

**IP67 waterproof test**  
Strips(ENP) into 1 meter water for 30 minutes

**Twist Test**  
NM3D1010/1010T 200 times Rotating (360°\*8times)  
NM3D1515/1515T 200 times Rotating (360°\*4times)

**Tensile Test**  
100N



**NM3D1010**  
CCT/Color: 2700K/3000K/4000K  
Input voltage: 24V  
Typ.power: 8W/m  
Lumens: 320LM/m

**NM3D1010T**  
CCT/Color: 2700K/3000K/4000K  
Input voltage: 24V  
Typ.power: 8W/m  
Lumens: 320LM/m

**NM3D1515**  
CCT/Color: 2700K/3000K/4000K  
Input voltage: 24V  
Typ.power: 7.2W/m  
Lumens: 400LM/m

**NM3D1515T**  
CCT/Color: 2700K/3000K/4000K  
Input voltage: 24V  
Typ.power: 7.2W/m  
Lumens: 400LM/m

**NM3D1515 (High-brightness version)**  
CCT/Color: 2700K/3000K/4000K  
Input voltage: 24V  
Typ.power: 12W/m  
Lumens: 700LM/m

**NM3D1515T (High-brightness version)**  
CCT/Color: 2700K/3000K/4000K  
Input voltage: 24V  
Typ.power: 12W/m  
Lumens: 700LM/m

